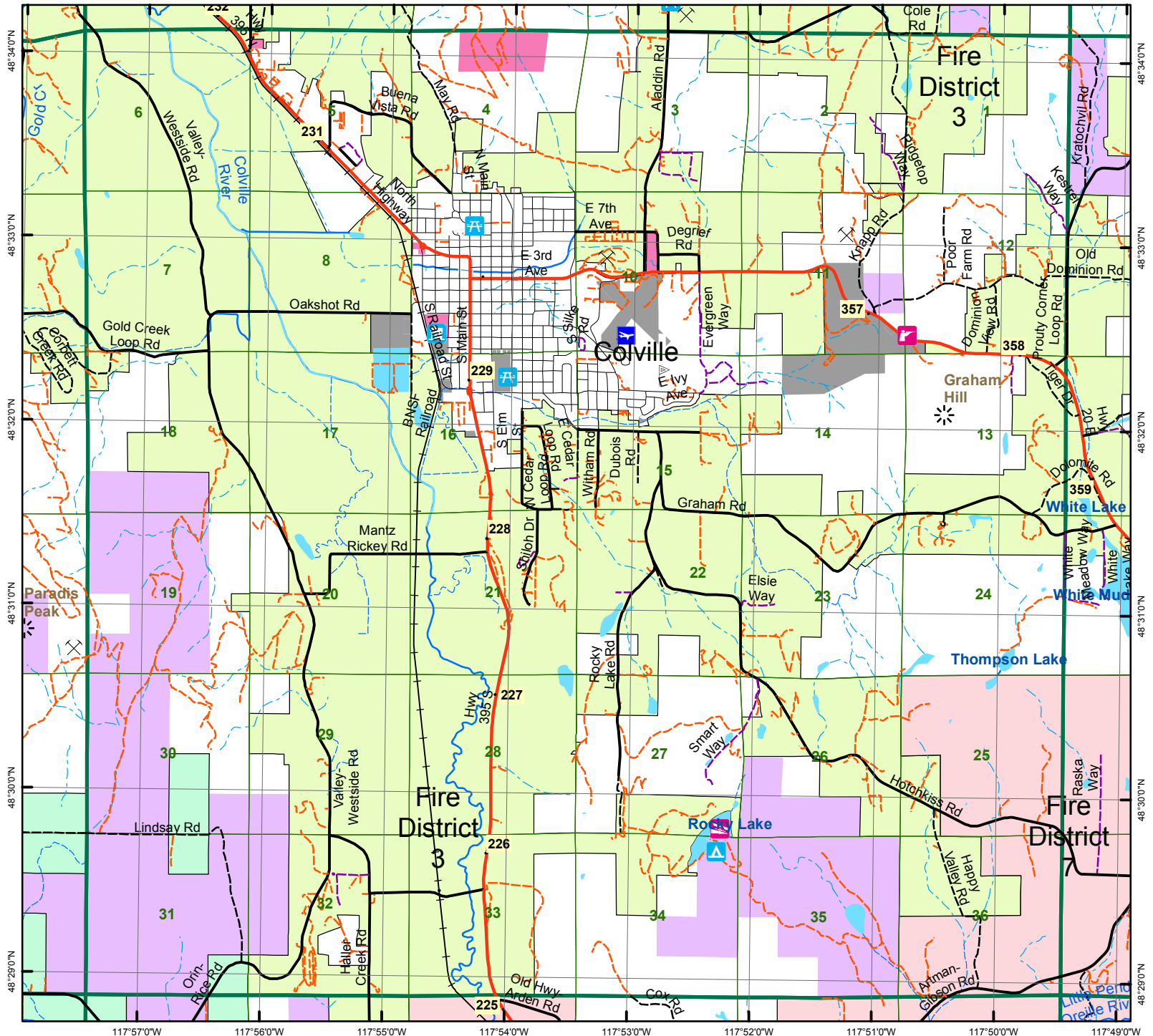


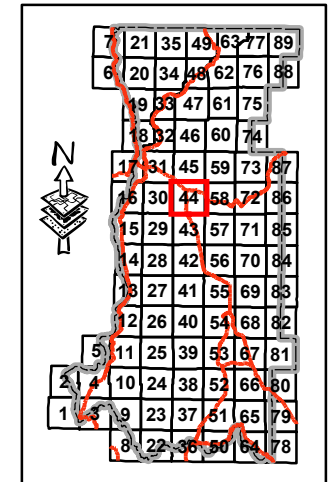
117°58'0"W 117°57'0"W 117°56'0"W 117°55'0"W 117°54'0"W 117°53'0"W 117°52'0"W 117°51'0"W 117°50'0"W 117°49'0"W



STEVENS COUNTY MAPBOOK

PAGE 44

Township 35 Range 39



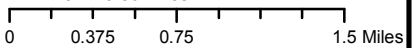
Disclaimer:

This GIS Data is deemed reliable but provided "as is" without warranty of any representation of accuracy, timeliness, reliability or completeness. These map documents do not represent a legal survey of the land and are for graphical purposes only. Use of this Data for any purpose should be with acknowledgment of the limitations of the Data, including the fact that the Data is dynamic and is in a constant state of maintenance, correction, and update.

Legend

- Transportation**
 - US/State Hwy
 - Paved Road
 - City Street
 - Gravel Road
 - Private Road
 - USFS Road
 - Other Road
 - BNSF RR
 - Trail
 - Ferry
- Streams**
 - Major
 - Minor
 - Intermittent
 - Lakes & Ponds
- County**
- Sections**
- Surface Mine**
- Public Lands**
 - City
 - Tribal Lands
 - County
 - BLM
 - BOR / NPS
 - F&WS
 - USFS
 - Immigration
 - WA F&W
 - WA DNR
 - Park & Rec.
- Fire Districts**
 - Dist 1
 - Dist 2
 - Dist 3
 - Dist 4
 - Dist 5
 - Dist 6
 - Dist 7
 - Dist 8
 - Dist 9
 - Dist 10
 - Dist 11
 - Dist 12
 - Hunters
- Summits**

1 Inch = 0.86 Miles



Prepared by Stevens County GIS
 Eva Shoemaker-Maffei - GIS Analyst
 215 S Oak St, Colville, WA 99114
 509-684-7505
 eshoemakermaffei@co.stevens.wa.us
 www.co.stevens.wa.us/gis/gis.htm

